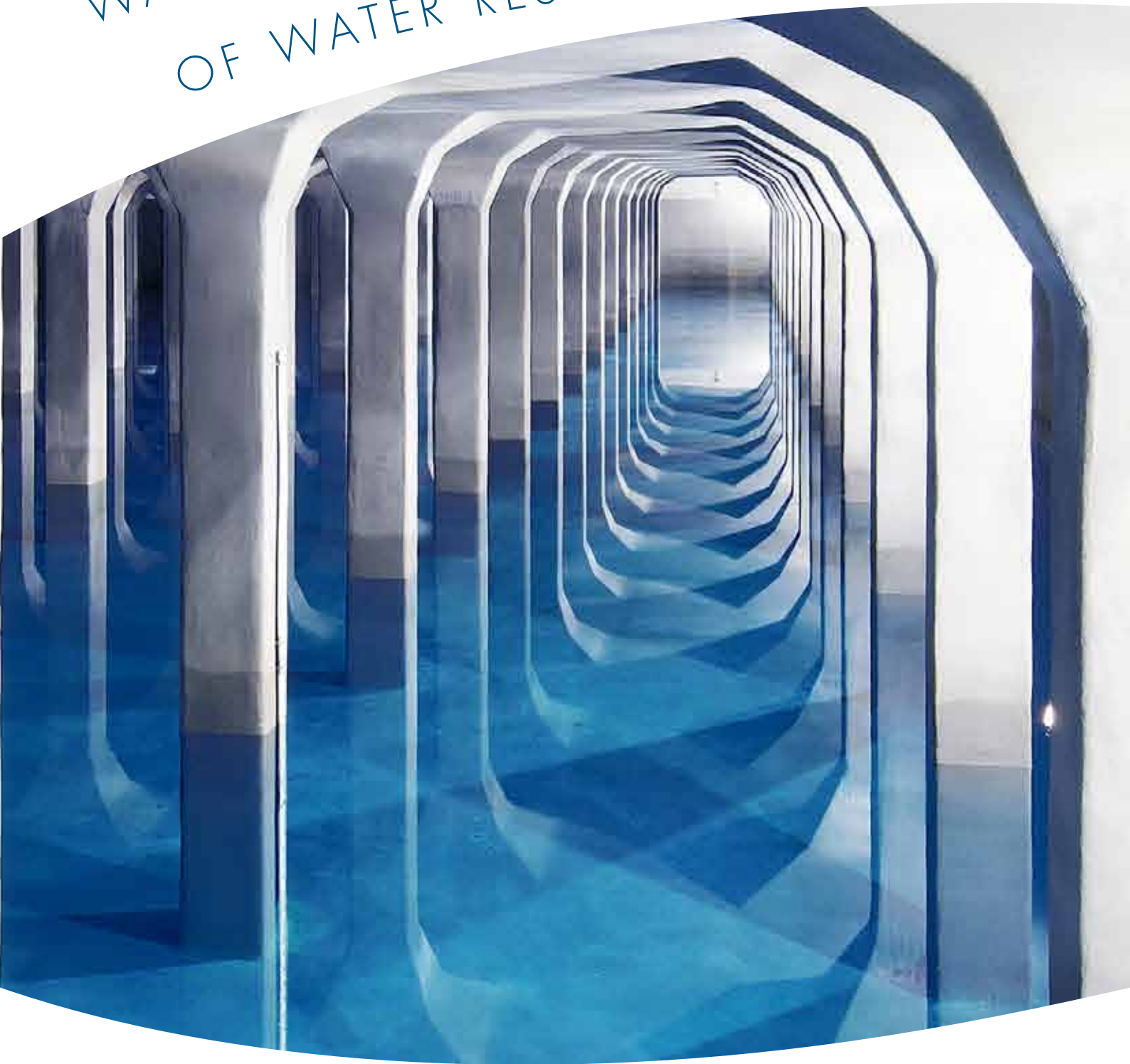


WATERPROOFING AND PROTECTION OF WATER RESERVOIRS



DRINKING WATER, OUR

Water is the basis of all life for humans, plants and animals. It is essential for the survival of Man, and must therefore be protected from aggressive elements during treatment and storage.



TESTED AND TRIED VANDEX COATINGS FOR PROTECTION OF DRINKING WATER

All materials that come into direct contact with drinking water from source to consumer must meet high standards.

As an internal coating of treatment and drinking water storage tanks, cement-based systems have a long track record from the hygienic, ecological and economic points of view. For many years, Vandex has been acknowledged as the leading supplier of innovative mineral products in the field of waterproofing and coating of drinking water tanks.

VANDEX EXPERTISE IN THE COATING OF DRINKING WATER TANKS

In the last 70 years Vandex has acquired a considerable amount of expertise in applying mineral based coatings in water tanks, and is today one of the leading companies in this sensitive and specialised field. Vandex offers a comprehensive range of mineral and polymer modified products as well as the relevant consultation service for designers and applicators.

COMPREHENSIVE RANGE OF MINERAL AND POLYMER MODIFIED SOLUTIONS PROVIDING ULTIMATE PROTECTION



POTABLE WATER APPROVED PRODUCT RANGE

CONCRETE REPAIR	HYGIENIC COATINGS FOR WATER	WATERPROOFING
VANDEX CORROSION PROTECTION M <ul style="list-style-type: none"> • for reinforcement steel protection 	VANDEX CEMLINE range Grey, White <ul style="list-style-type: none"> • inner coatings and reprofiling mortars 	VANDEX SUPER, SUPER WHITE, CONCRETE GREY <ul style="list-style-type: none"> • crystalline waterproofing
VANDEX UNI MORTAR 1 <ul style="list-style-type: none"> • waterproofing and repairing mortar 	VANDEX BB range Grey, White <ul style="list-style-type: none"> • waterproofing slurries 	VANDEX BB range Grey, White <ul style="list-style-type: none"> • waterproofing slurries
VANDEX CEMLINE MORTAR <ul style="list-style-type: none"> • reprofiling mortar for drinking water tank 	VANDEX CEMELAST range White, Grey, Blue <ul style="list-style-type: none"> • elasticised waterproofing slurries 	VANDEX UNI MORTAR 1 <ul style="list-style-type: none"> • waterproofing and repairing mortar
VANDEX CEMLINE MG 4 range <ul style="list-style-type: none"> • fibre reinforced spray and repair mortar 	VANDEX MINERALIT <ul style="list-style-type: none"> • surface hardening agent, liquid 	VANDEX PLUG <ul style="list-style-type: none"> • cementitious waterproof plugging compound
		VANDEX CEMELAST range Grey, White, Blue <ul style="list-style-type: none"> • elasticised waterproofing slurries

MOST PRECIOUS RESOURCE

WRAS
Water Regulations Advisory Scheme

DVGW

NSF

IN THE LAST 70 YEARS VANDEX HAS ACQUIRED
A CONSIDERABLE AMOUNT OF EXPERTISE.

WATER APPROVALS
SINCE 1965

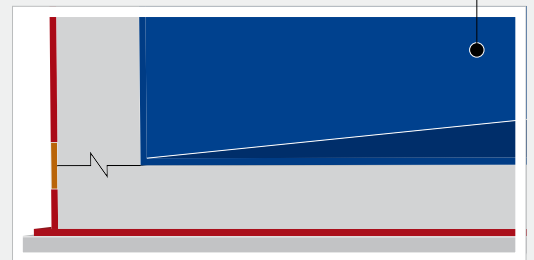
HIGH STANDARDS FOR COATINGS IN DRINKING WATER TANKS

The coating of drinking water tanks must meet high hygienic standards, while at the same time protecting the structure of the tank. Additional requirements also have to be met, such as:

- waterproofing properties
- microbiological growth
- sealing of blow holes
- resistant to attack from condensate
- high resistance to leaching
- smooth, easily-cleaned surface

TYPICAL SYSTEM FOR NEW STRUCTURES

waterproofing (VANDEX SUPER, BB 75) or
hygienic coating (VANDEX CEMLINE)



PRODUCTS FOR STRUCTURAL WATERPROOFING

1 DUALSEAL

- HDPE Bentonite sheet

2 HERMAFLOOR SEAM

- epoxy injection

3 VANDEX EXPASEAL N / SUPERSTOP

- expanding waterstop / bentonite waterstop

4 VANDEX CONSTRUCTION JOINT TAPE

- sealing tape bonded with VANDEX CEMELAST

5 HYGIENIC COATING / WATERPROOFING

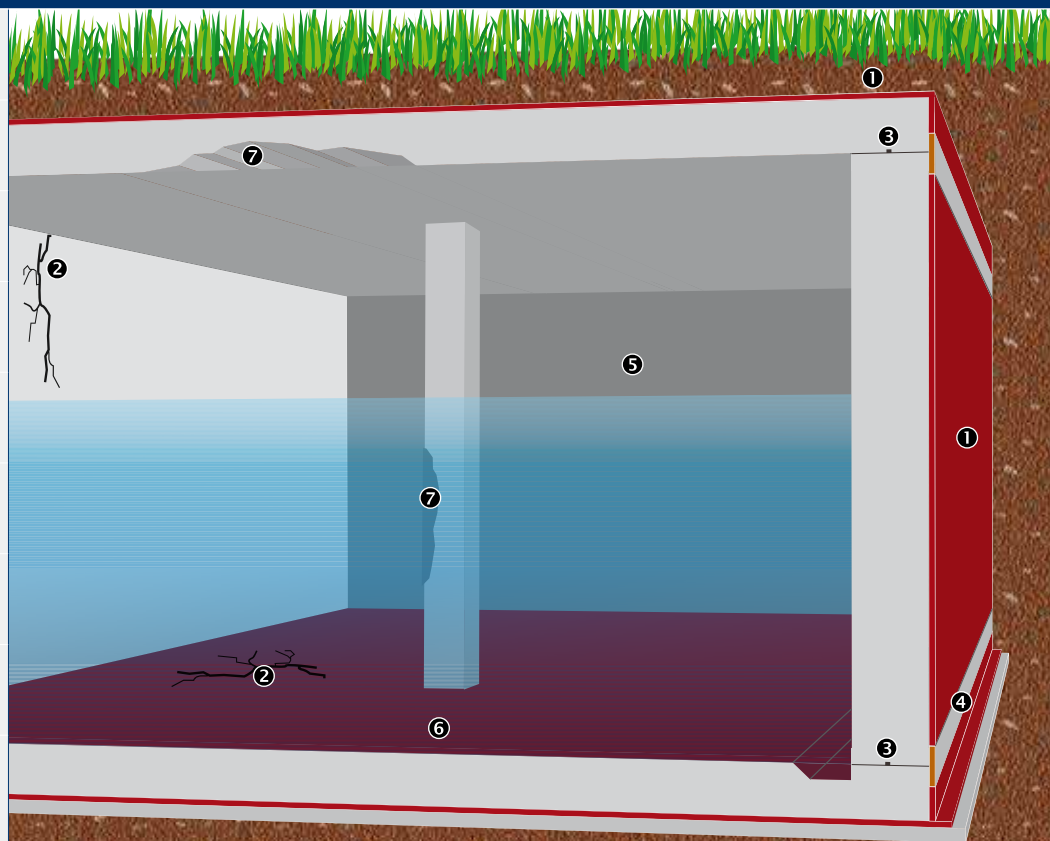
- depending on project specifications

6 VANDEX FLEXTAPE

- sealing tape for joints and cracks

7 CONCRETE REPAIR SOLUTION

- depending on damage assessment



VANDEX AT WORK

Vandex products are easy to apply. The finished surface will fulfil the high standards for coating of drinking water tanks. Continuous quality control secure high and uniform quality, assuring products will perform in accordance with product literature if applied in accordance with this. Vandex's world wide expertise is available to users, designers and applicators through our network of partners and distributors.

**VANDEX'S WORLD WIDE EXPERTISE
GUARANTEES GOOD RESULTS.**



RPM/Belgium N.V.

H. Dunantstraat 11B · B-8700 Tielt · T.:+32 (0) 51 40 38 01

Alteco Technik GmbH

Raiffeisenstraße 16 · D-27239 Twistringen · T.:+49 (0) 42 43 92 95 0

Hermeta GmbH

Kanalstraße 11 · D-12357 Berlin · T.:+49 (0) 30 661 70 72

Monile France SARL

10, rue de la Lande · F-35430 St. Jovan des Guerets · T.:+33 (0) 608 86 96 56

Vandex International Ltd

Rötistrasse 6 · CH-4501 Solothurn · T.:+41 (0) 32 626 36 36

Vandex Isoliermittel-GmbH

Industriestraße 19–23 · D-21493 Schwarzenbek · T.:+49 (0) 41 51 89 15 0

Vandex AG

Rötistrasse 6 · CH-4501 Solothurn · T.:+41 (0) 32 626 36 46

Alteco Polymer Systems

436 Seventh Avenue, Suite 1850 · Pittsburgh, PA 15219 · T.: +1 216 258 8715

**VANDEX PROTECTS
DRINKING WATER**

**APPROVED AND TESTED PRODUCTS:
DRINKING WATER RESERVOIRS**



Vandex



*Drinking water,
our most precious
resource*

Vandex approved products: drinking water reservoirs



Product name/ type of product			Approvals and tests			
			DWI / WRAS	DVGW / KTW	NSF	Others available
VANDEX	refer also to Technical Data Sheets	consumption				
Substrate hardening						
MINERALIT	substrate hardening agent	250 ml/m ²		✓		
CEMLINE STON	substrate hardening agent	250 ml/m ²	✓			
Repair and levelling mortar						
PLUG	cementitious waterproof plugging compound	approx. 200 g/100 cm ³	✓			✓
CORROSION PROTECTION M	corrosion protection for reinforcement steel	2–4 kg/m ²		✓		
UNI MORTAR 1	waterproofing and repairing mortar	12–24 kg/m ²		✓		
CEMLINE UM1	waterproofing and repairing mortar	12–24 kg/m ²	✓			
CEMLINE MORTAR	repair mortar and inner coating for drinking water	12–24 kg/m ²		✓		
CEMLINE MG 4	fibre reinforced spray and repair mortar, 5–50 mm per layer	2 kg/m ² per 1 mm layer		✓		
CEMLINE MG 4 FF H	high density reprofiling mortar, 10–30 mm per layer	2 kg/m ² per 1 mm layer		✓		
RAPID M	rapid waterproofing repair mortar, 1 hour	12–24 kg/m ²		✓		
Sanitary coating						
SUPER	slurry in-depth waterproofing and protection, grey	1–1.5 kg/m ²	✓		✓	✓
SUPER WHITE	slurry in-depth waterproofing and protection, white	1–1.5 kg/m ²			✓	✓
BB 75	waterproofing slurry, grey	3–6 kg/m ²		✓	✓	✓
CEMLINE BB-G	waterproofing slurry, grey	3–6 kg/m ²	✓		✓	✓
CEMLINE TOP GREY/WHITE	final protective slurry for drinking water, grey/white	6–8 kg/m ²		✓		✓
CEMELAST	elasticized inner coating for drinking water, grey	4–6 kg/m ²		✓		✓
BB WHITE	waterproofing slurry, white	6 kg/m ²		✓		✓
CEMLINE BB-W	waterproofing slurry, white	6 kg/m ²	✓			✓
CEMLINE CG	slurry in-depth waterproofing and protection, light grey	1–1.5 kg/m ²	✓			
Surface hardening						
MINERALIT	surface hardening agent	250 ml/m ²		✓		
CEMLINE STON	surface hardening agent	250 ml/m ²	✓			
Speciality products						
CONCRETE GREY	slurry in-depth waterproofing and protection, light grey	1–1.5 kg/m ²				
CONSTRUCTION JOINT TAPE	waterproofing tape for construction joints and cracks	1.0 m tape 1.0 kg/m CEMELAST				✓
FLEXTAPE ADHESIVE TW	epoxy adhesive, also used with tapes	1,1 kg per metre of FLEXTAPE		✓		
CEMELAST WHITE/BLUE	elasticized inner coating for drinking water, white/blue	4–6 kg/m ²		✓		

Note
NSF SUPER, SUPER WHITE, BB 75, UNIMORTAR 1Z, AM 10 when produced at Euclid Cleveland Plant.
DVGW W270, W347 and some W300

The information contained herein is based on our longterm experience and the best of our knowledge. We can, however, make no guarantee since for a successful outcome, all circumstances in an individual case must be taken into consideration. Indications of quantities required are only averages which in certain cases might be greater.



RPM/Belgium N.V.
H. Dunantstraat 11B · B-8700 Tielt · T.:+32 (0) 51 40 38 01

Alteco Technik GmbH
Raiffeisenstraße 16 · D-27239 Twistringen · T.:+49 (0) 42 43 92 95 0

Hermeta GmbH
Kanalstraße 11 · D-12357 Berlin · T.:+49 (0) 30 661 70 72

Monile France SARL
10, rue de la Lande · F-35430 St. Jovan des Guerets · T.:+33 (0) 608 86 96 56

Vandex International Ltd
Rötistrasse 6 · CH-4501 Solothurn · T.:+41 (0) 32 626 36 36

Vandex Isoliermittel-GmbH
Industriestraße 19–23 · D-21493 Schwarzenbek · T.:+49 (0) 41 51 89 15 0

Vandex AG
Rötistrasse 6 · CH-4501 Solothurn · T.:+41 (0) 32 626 36 46

Alteco Polymer Systems
436 Seventh Avenue, Suite 1850 · Pittsburgh, PA 15219 · T.: +1 216 258 8715